

# MONTHLY MEMBERSHIP PROGRESS REPORT

LOCATION NEW ZEALAND

District 202 F

Results as of: 6/30/2021

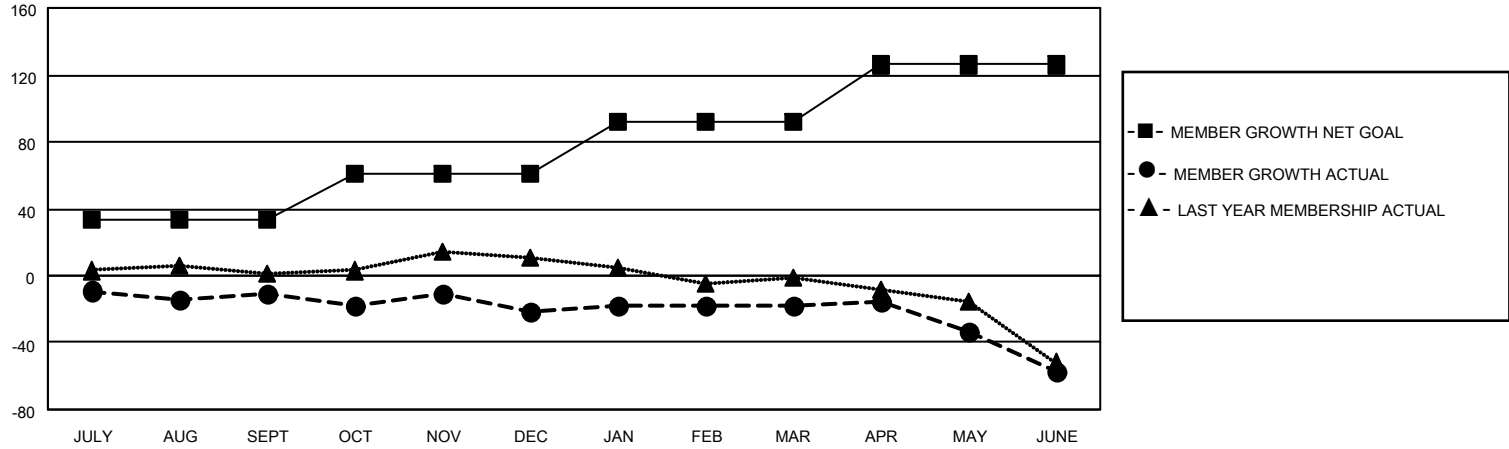
Clubs			
RESULTS FOR 2020-2021			
QUARTER	NEW CLUB GOAL	NEW CLUBS	DROPPED CLUBS
JULY/AUG/SEPT	0	0	1
OCT/NOV/DEC	0	0	0
JAN/FEB/MAR	0	0	0
APR/MAY/JUNE	0	0	0

Members			
RESULTS FOR 2020-2021			
QUARTER	MEMBER GROWTH NET GOAL	MEMBER GROWTH ACTUAL	DROPPED MEMBERS ACTUAL (including transfers)
JULY/AUG/SEPT	33	20	28
OCT/NOV/DEC	28	27	34
JAN/FEB/MAR	31	20	15
APR/MAY/JUNE	34	22	58

**GOALS AND ACTUAL NEW CLUBS CUMULATIVE**



**GOALS AND ACTUAL MEMBERS CUMULATIVE**



DROPPED CLUBS: 1	27 CLUBS OF 46 ADDED 1 OR MORE NEW MEMBERS	<u>GENDER DISTRIBUTION</u> MALE 828 (66.08%) FEMALE 425 (33.92%)
<u>DROPPED MEMBERS</u> DECEASED 20 CLUB CANCELLED 0 OTHER 115 TOTAL 135	<a href="#">CLICK HERE FOR CUMULATIVE MEMBERSHIP DATA</a>	TOTAL FAMILY UNIT MEMBERS 89 FAMILY MEMBERS PAYING HALF DUES 45